



FRONT SIDEWALL ELEVATION



LEFT ENDWALL ELEVATION

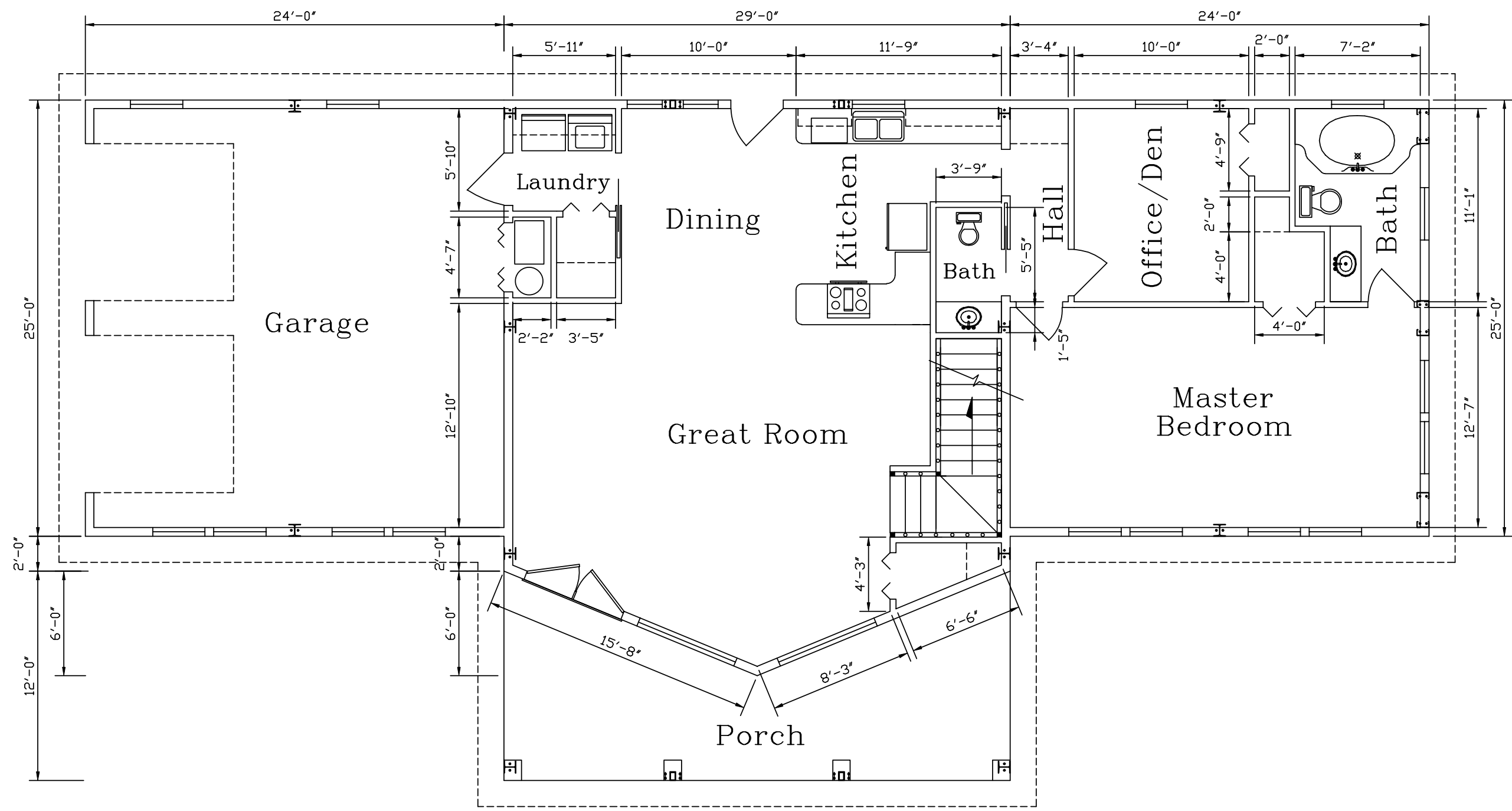


BACK SIDEWALL ELEVATION



RIGHT ENDWALL ELEVATION

REVISIONS				KODIAK STEEL HOMES			
NO.	DATE	DESCRIPTION	BY	CK'D	Kodiak Steel Homes, Inc 7301 Industry Drive North Little Rock, AR 72117		
					ELEVATIONS		
					STYLE: ASPEN 1	SIZE: 29'-0" X 39'-0"	
					DRN. BY: EAP	CK'D BY: HDS	DATE: 04/03
					SCALE: NTS	CODE: AS1	SHEET NO.: A1 OF 10
							REV. #

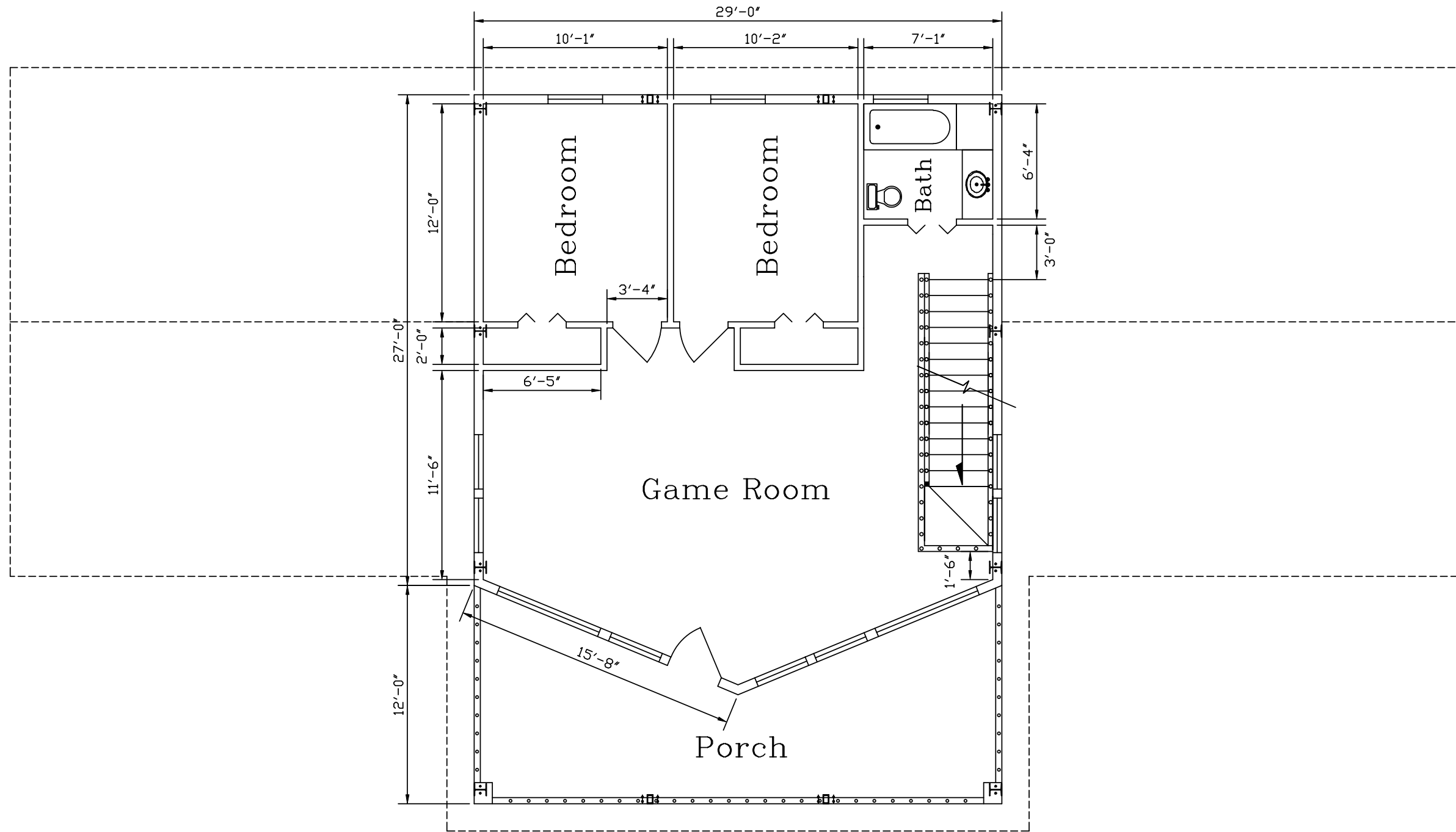


Bottom Floor

EXTERIOR FLOOR PLAN WINDOW AMOUNT = 20
 EXTERIOR FLOOR PLAN DOOR AMOUNT = 5

DISCLAIMER:
 THIS FLOOR PLAN IS FOR REFERENCE ONLY.
 LOCAL BUILDING CODES AND REGULATIONS
 MAY CONFLICT.

REVISIONS				KODIAK STEEL HOMES			
NO.	DATE	DESCRIPTION	BY	CK'D	Kodiak Steel Homes, Inc 7301 Industry Drive North Little Rock, AR 72117		
					DESCRIPTION: DOWNSTAIRS FLOOR PLAN		
					STYLE: ASPEN 1	SIZE: 29'-0" X 39'-0"	
					DRN. BY: EAP	CK'D BY: HDS	DATE: 04/03
					SCALE: NTS	CODE: AS1	SHEET NO. A2 OF 10
							REV. #



Top Floor

DISCLAIMER:
 THIS FLOOR PLAN IS FOR REFERENCE ONLY.
 LOCAL BUILDING CODES AND REGULATIONS
 MAY CONFLICT.

EXTERIOR FLOOR PLAN WINDOW AMOUNT = 12
 EXTERIOR FLOOR PLAN DOOR AMOUNT = 1

REVISIONS				KODIAK STEEL HOMES			
NO.	DATE	DESCRIPTION	BY	CK'D	Kodiak Steel Homes, Inc 7301 Industry Drive North Little Rock, AR 72117		
					DESCRIPTION: UPSTAIRS FLOOR PLAN		
					STYLE: ASPEN 1		SIZE: 29'-0" X 39'-0"
					DRN. BY EAP	CK'D BY HDS	DATE 04/03
					SCALE NTS	CODE AS1	SHEET NO. A3 OF 10
							REV. #