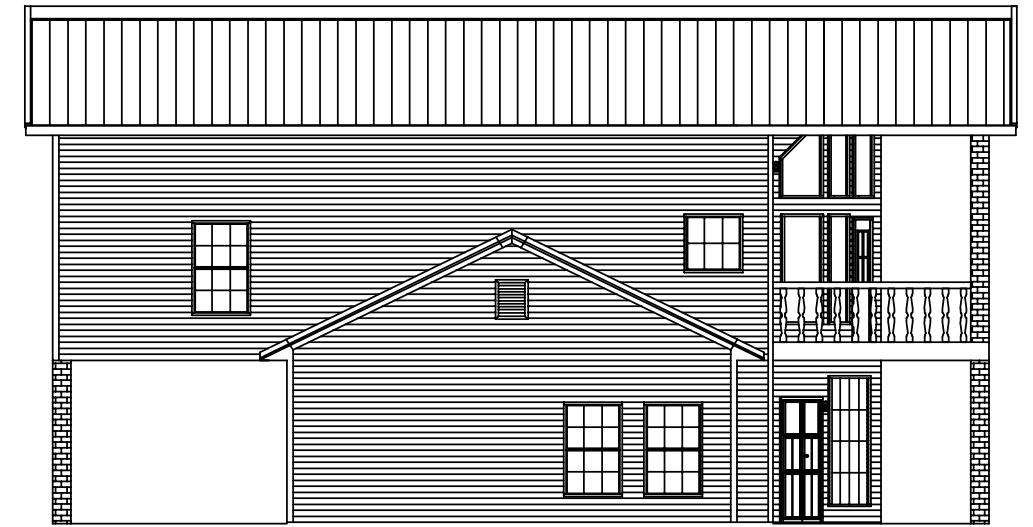




FRONT SIDEWALL ELEVATION



LEFT ENDWALL ELEVATION



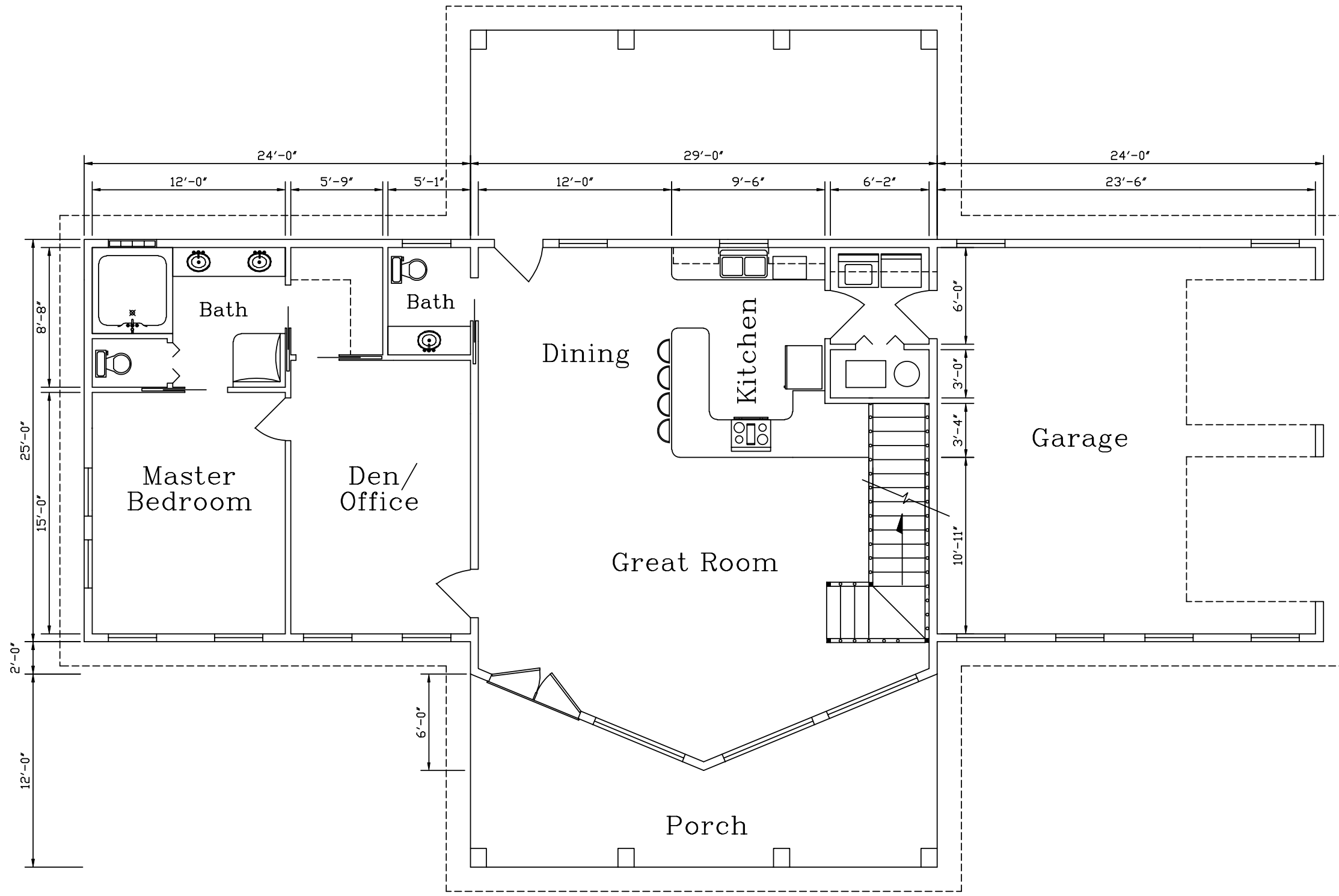
BACK SIDEWALL ELEVATION



RIGHT ENDWALL ELEVATION

REVISIONS				KODIAK STEEL HOMES			
NO.	DATE	DESCRIPTION	BY	CK'D	Kodiak Steel Homes, Inc 7301 Industry Drive North Little Rock, AR 72117		

**DISCLAIMER:**  
 THIS FLOOR PLAN IS FOR REFERENCE ONLY.  
 LOCAL BUILDING CODES AND REGULATIONS  
 MAY CONFLICT.



Bottom Floor

EXTERIOR FLOOR PLAN WINDOW AMOUNT = 19  
 EXTERIOR FLOOR PLAN DOOR AMOUNT = 5

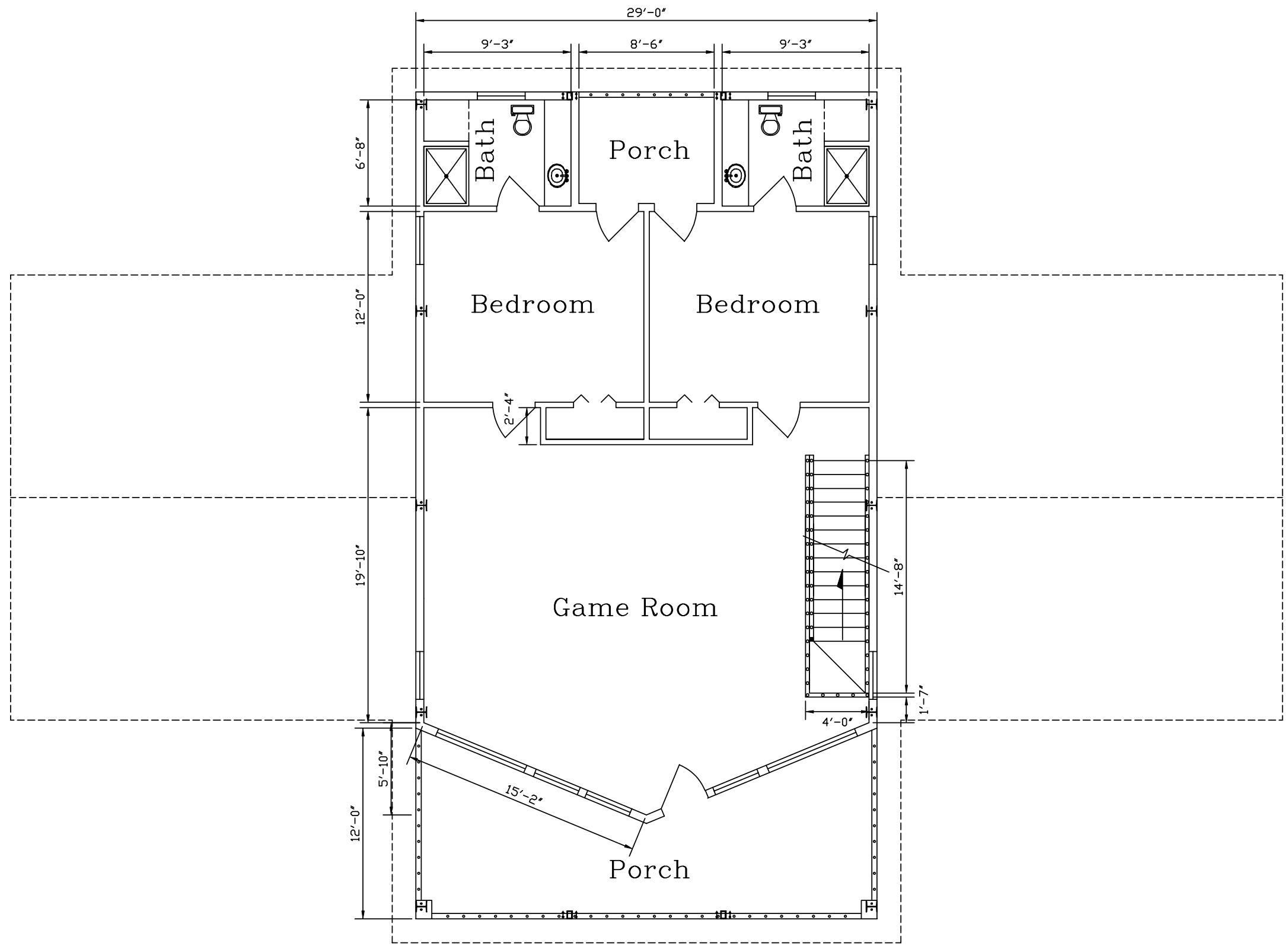
REVISIONS			
NO.	DATE	DESCRIPTION	BY CK'D

<b>KODIAK STEEL HOMES</b>		Kodiak Steel Homes, Inc 7301 Industry Drive North Little Rock, AR 72117	
DESCRIPTION: DOWNSTAIRS FLOOR PLAN		STYLE: ASPEN 2	
DRN. BY: EAP		CK'D BY: HDS	DATE: 04/03
SCALE: NTS	CODE: AS2	SHEET NO.: A2 OF 10	REV. #

© COPYRIGHT 2003 ALL STEEL HOMES, INC.

**DISCLAIMER:**  
 THIS FLOOR PLAN IS FOR REFERENCE ONLY.  
 LOCAL BUILDING CODES AND REGULATIONS  
 MAY CONFLICT.



EXTERIOR FLOOR PLAN WINDOW AMOUNT = 11  
 EXTERIOR FLOOR PLAN DOOR AMOUNT = 3

Top Floor

REVISIONS				KODIAK STEEL HOMES			
NO.	DATE	DESCRIPTION	BY	CK'D	Kodiak Steel Homes, Inc 7301 Industry Drive North Little Rock, AR 72117		
					DESCRIPTION: UPSTAIRS FLOOR PLAN		
					STYLE: ASPEN 2	SIZE: 29'-0" X 52'-0"	
					DRN. BY: EAP	CK'D BY: HDS	DATE: 04/03
					SCALE: NTS	CODE: AS2	SHEET NO. A3 OF 10
							REV. #