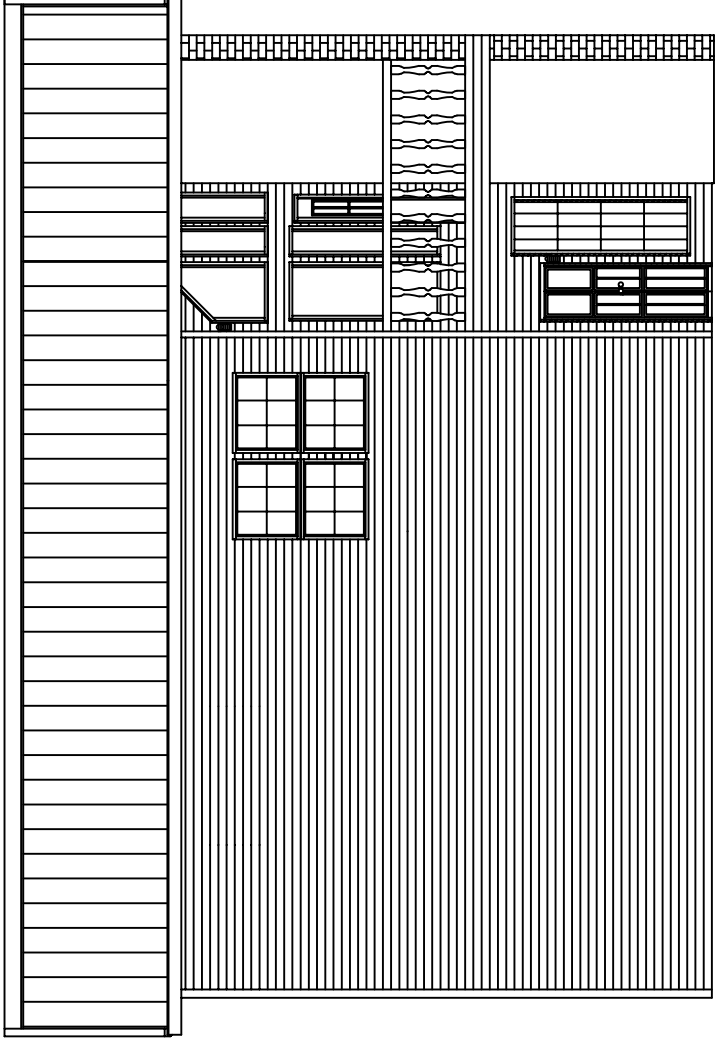
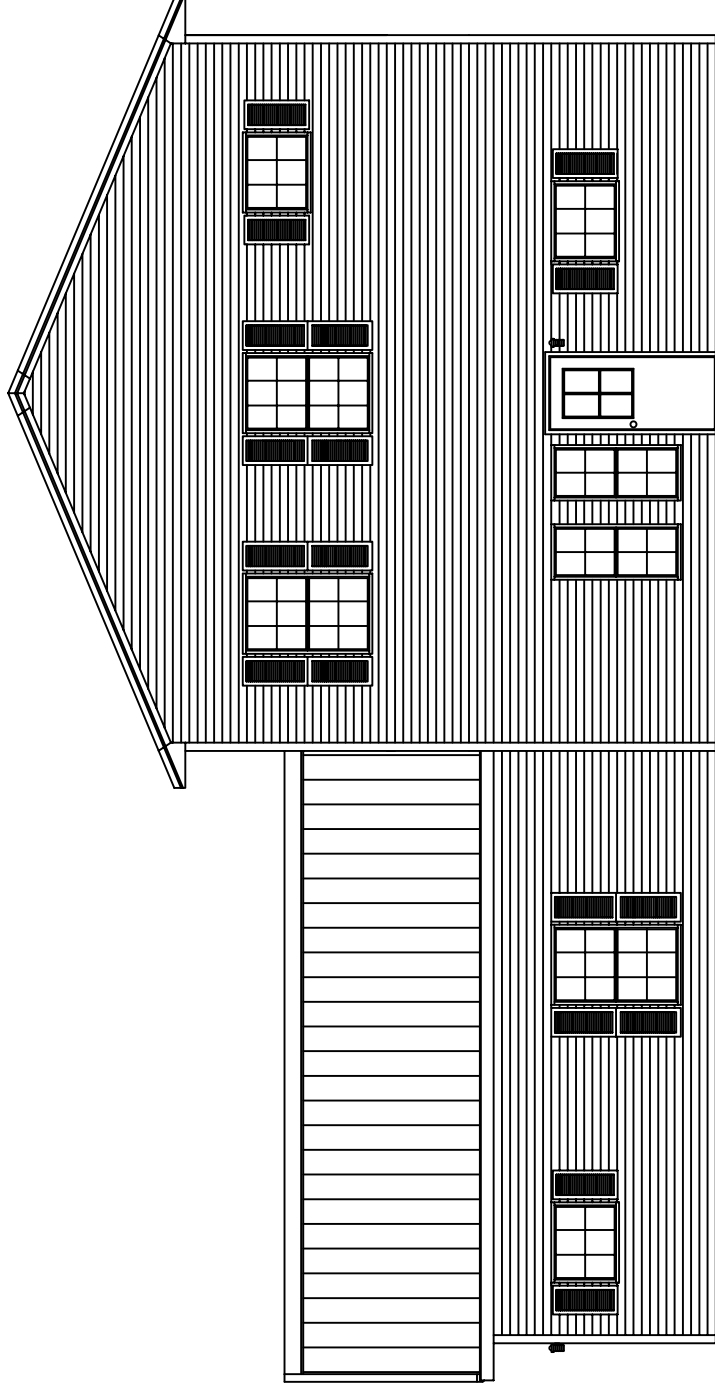


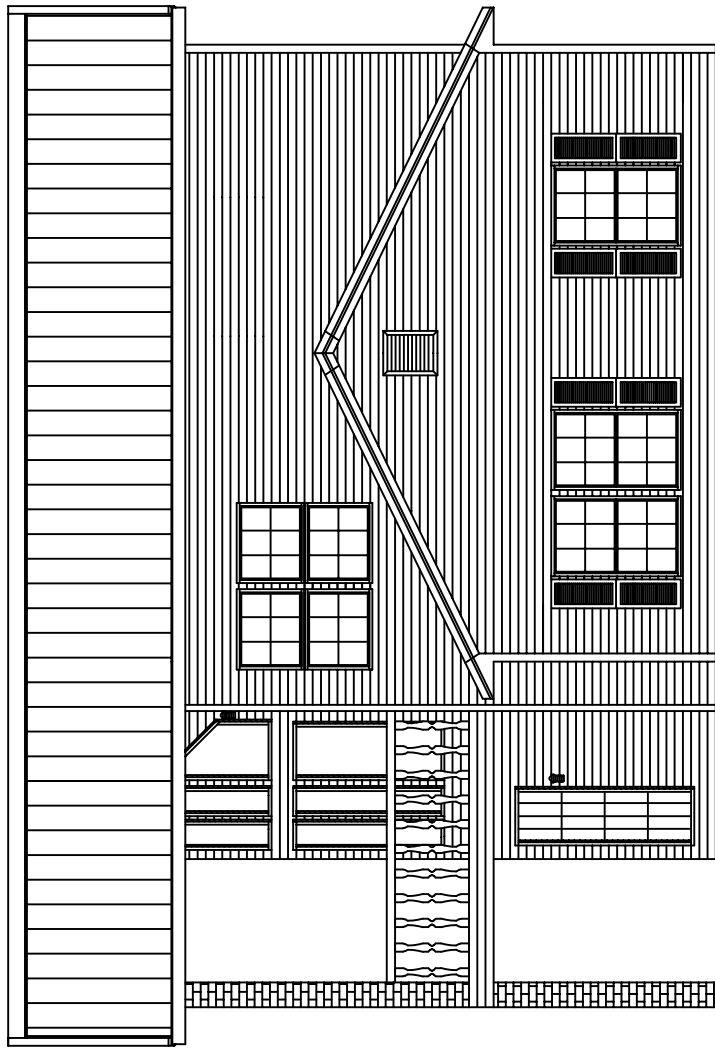
FRONT SIDEWALL ELEVATION



LEFT EDWALL ELEVATION



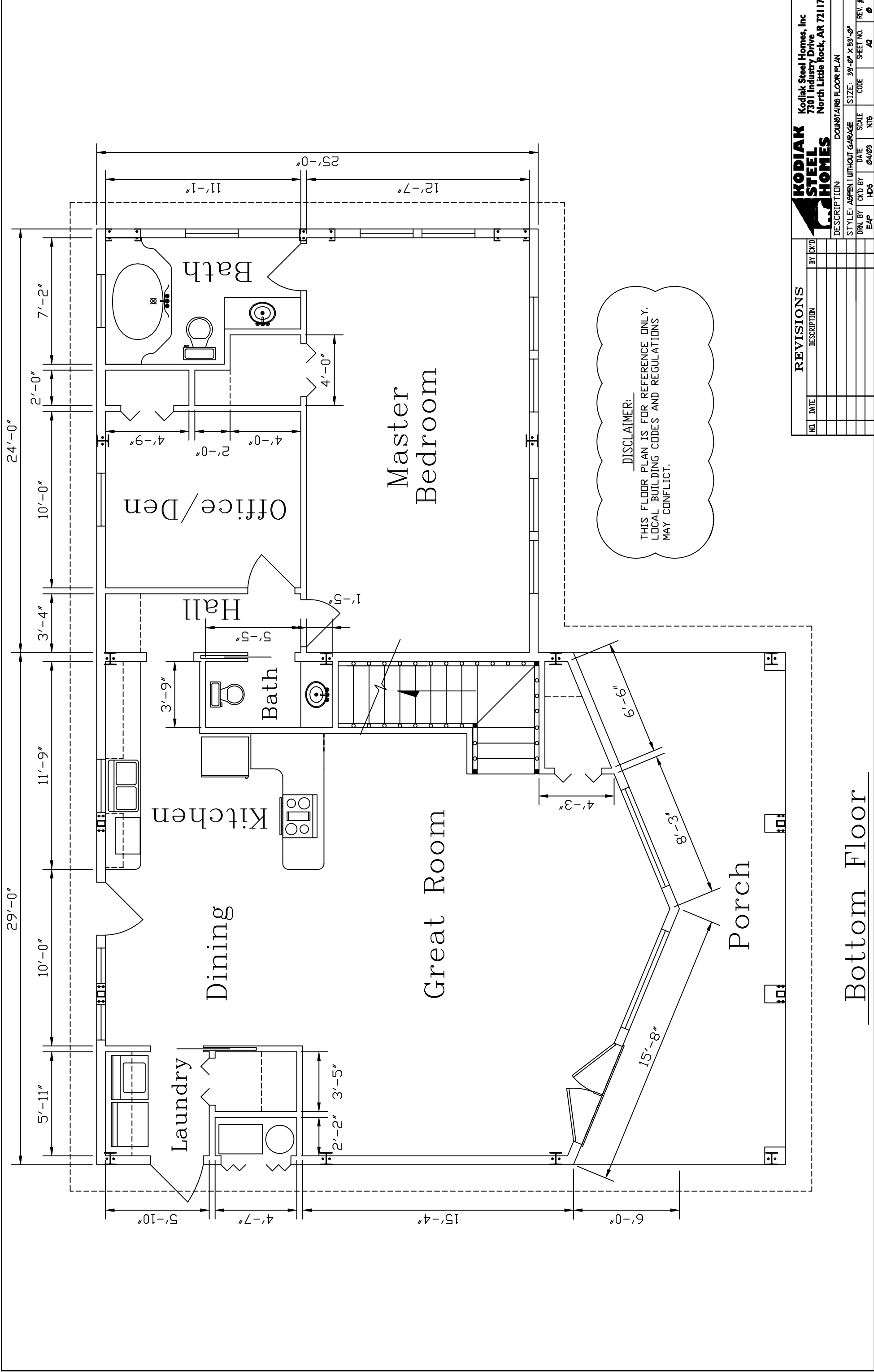
BACK SIDEWALL ELEVATION



RIGHT EDWALL ELEVATION

NO.	DATE	DESCRIPTION	BY (K/D)

<b>KODIAK STEEL HOMES</b> Kodiak Steel Homes, Inc 7301 Industry Drive North Little Rock, AR 72117		ELEVATIONS STYLE: APEN / WITHOUT GARAGE SIZE: 39'-0" X 53'-0"
DRW. BY: EAP CKD BY: HD5	DATE: 04/03 SCALE: NTS	CODE: AI SHEET NO.: AI REV. #: 0



Bottom Floor

REVISIONS		DESCRIPTION	BY	DATE

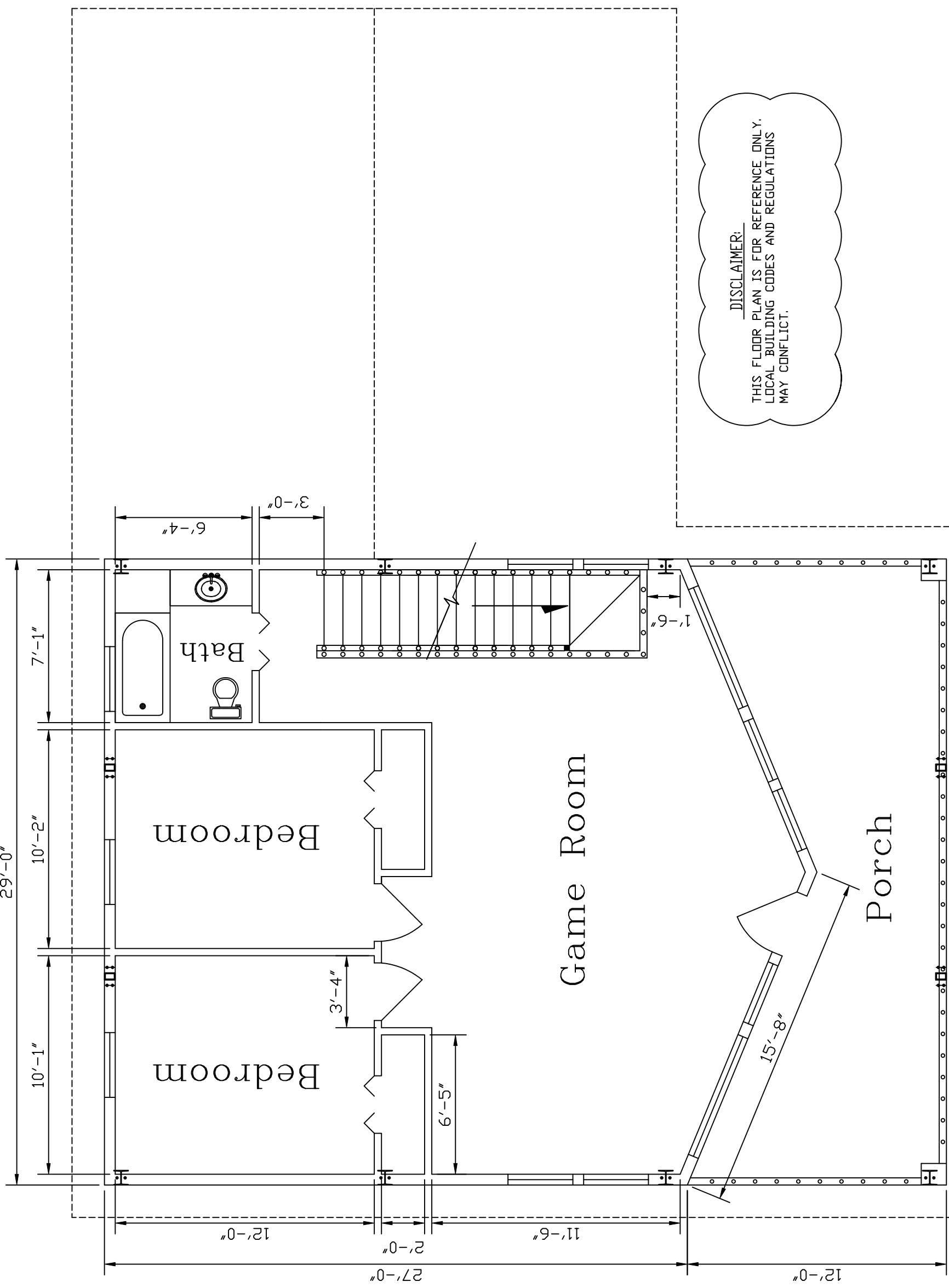
KODIAK STEEL HOMES  
 Kodiak Steel Homes, Inc  
 7301 Industry Drive  
 North Little Rock, AR 72117

DESCRIPTION: DOWNSTAIRS FLOOR PLAN  
 STYLE: ASPEN / WITHOUT GARAGE  
 SIZE: 39'-0" X 53'-0"  
 DRN. BY: EAP  
 CKD BY: HDG  
 DATE: 04/03  
 SCALE: NTS  
 SHEET NO.: A2  
 REV. # 0

REVISIONS		DESCRIPTION		BY	DATE
NO.	DATE	DESCRIPTION		BY	DATE

**KODIAK STEEL HOMES**  
 Kodiak Steel Homes, Inc  
 7301 Industry Drive  
 North Little Rock, AR 72117

DESCRIPTION: UPSTAIRS FLOOR PLAN  
 STYLE: ASPEN / WITHOUT GARAGE  
 SIZE: 39'-0" X 53'-0"  
 DRW. BY: EAP  
 CKD BY: HD5  
 DATE: 04/03  
 SCALE: NTS  
 SHEET NO.: A3  
 REV. #:



DISCLAIMER:  
 THIS FLOOR PLAN IS FOR REFERENCE ONLY.  
 LOCAL BUILDING CODES AND REGULATIONS  
 MAY CONFLICT.

Top Floor